

# AYDINDISPLAYS

a  sparton company



*Product Catalog &  
Company Overview*

# Choose

## **Quality. Reliability. Commitment.**

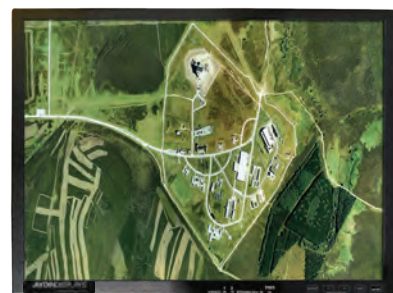
*These words describe the display industry philosophy. Aydin understands and embraces this philosophy by designing and manufacturing displays built with quality, reliability and commitment that create long term solutions for our customers.*

*Aydin Displays is a leading provider in display manufacturing technology, servicing the industrial, military and air traffic control industries. Aydin offers a variety of industrial displays, rugged military/COTS flat panel displays, military and industrial panel PC workstations, and air traffic control displays, ranging in size from 8.4" to 65" and available in numerous mounting options. Many of our products comply with shock, vibration and EMI Military standards and can be customized to include options such as integrated touchscreens.*

*Processing information is vital in maintaining stability in harsh military and industrial environments, as well as chaotic air traffic control environments. With over 46 years experience manufacturing high quality, high reliability displays, we understand the specific requirements of long life cycle, customer support, and demanding image fidelity unique to rugged environments. Collectively, Aydin has installed over 300,000 display units in their ongoing support of many government contracts, including the US Navy's CDS program and the rapidly growing command and control logistics market for Unmanned Aerial Vehicles (UAVs).*

*Aydin is certified AS9100C for its Quality Management System (QMS). This certification verifies that the company's processes related to design and manufacture have met or exceeded the required standard, that all products will have both quality and traceability, and that all processes and procedures used are documented – which results in consistency and value.*

*Our unsurpassed commitment to quality allows us to provide unique solutions for our customers. Make Aydin your display technology partner.*





# Your Rugged Display



# A History Of

**1967**

*Aydin Corporation formed. The Aydin Corporation manufactured, among other things, color CRT monitors and computer workstations.*

**1996**

*Two parts of Aydin Corporation- Aydin Controls and Aydin Computer Systems Military Display Group- merge to form the Aydin Displays Division of Aydin Corporation.*

**1998**

*Video Display Corporation purchases the Aydin Displays.*

**2005**

*Aydin acquires the Innovative Display Systems (IDS) division of Three-Five Systems (TFS). VDC announces the expansion of Aydin Displays by merging XKD Corporation of Morgan Hills, CA, and Teltron Technologies, of Birdsboro, PA.*

**2006**

*Aydin acquires EDL Displays.*

**2012**

*Aydin Displays forms new division- Aydin CyberSecurity, which specializes in advanced TEMPEST technology and products.*

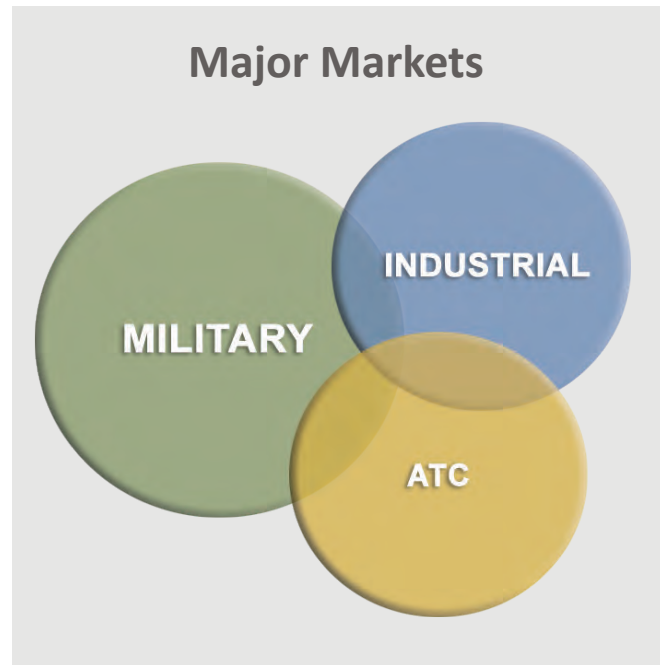
**2013**

*Aydin Displays acquired by Sparton Corporation.*

~

*These mergers and acquisitions expand the line of products Aydin offers, while allowing continued support for key legacy products from the acquired companies. Now with the corporate resources of Sparton, Aydin's future continues to grow.*

*Aydin's facility is located in Birdsboro, PA and is approximately 40,000 square feet, 30,000 of which is dedicated to the production of flat panel displays.*





# Quality

- *Customer Satisfaction and Product Support Are Aydin's Top Priorities*
- *Over 46 Years of Display Experience*
- *Standard and Custom Supplier*
- *300,000+ Units Installed*
- *Leading Edge Technology*
- *Low Failure Rate*
- *Wide Range of Packages and Products*
- *High Quality Standards – AS9100/ISO9001 since 1996*
- *Configuration Control to Military Standards*



# 25" OLED



## Built Aydin Rugged

*Aydin Displays announces the 25" OLED display, built from the highly anticipated and cutting edge organic light-emitting diode (OLED) technology. This display provides a clear, crisp image with deep blacks and rich colors, along with outstanding contrast performance in ambient light and dark environments. The unit boasts full HD resolution at 1920 x 1080, with superb picture quality, accurate black reproduction, lightning fast response and virtually no motion blur.*

# D i s p l a y

## Organic Light Emitting Diode (OLED) Display

Full HD Resolution (1920 x 1080)

Superb picture quality

Accurate black reproduction

Outstanding contrast performance  
in ambient light and dark environments

Quick response with virtually no motion blur

High-purity deep color reproduction  
and wide color gamut

Designed and Built to Military Standards

# Military Grade Displays



*Aydin Displays has been designing and supplying ruggedized display equipment and computer workstations for military programs for over 46 years. Aydin has a proven reputation of expertise in designing, manufacturing, testing and qualifying ruggedized equipment for operation in severe military environments such as ground mobile, airborne, surface warships and submarines.*

*All products can be customized to customer requirements.*

*Meet Severe Military Environments*

*Shock (MIL-S-901D)*

*Vibration (MIL-STD-167-1A)*

*EMI (MIL-STD-461F)*

*Temperature (MIL-STD-810G)*



# Features And Enhancements

*Aydin Displays performs many enhancements to standard AMLCD panels:*

- *Sunlight Readability For Direct Sunlight Environments*
- *Passive Enhancements for High Contrast Ratio*
- *LED Backlight Installation*
- *Full Dimming of Backlight (Dim To Zero) for Nighttime Usage*
- *Night Vision Compatibility with Night Vision Goggles*
- *AMLCD Heaters for Low Temperature (-31°C) Operation*
- *Low Storage Temperature (-55°C)*
- *Operation in 100% Humidity with Condensation*
- *Sealed Units For Submersible Operation*
- *Lamination*

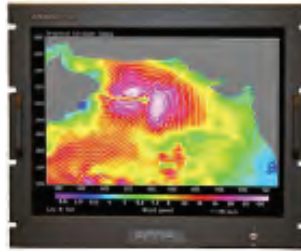


*Aydin's in-house clean room facility*

# Rugged Military Series Standard LCD Displays



**15" Model 4415P2**  
 1024 x 768 Native Resolution  
 Designed & Built to MIL Standards  
 Sunlight Readable 1500 nits  
 HD15 Input  
 115/220 VAC Power  
 Resistive Touchscreen



**17" Model 4417A1**  
 1280 x 1024 Native Resolution  
 Designed & Built to MIL Standards  
 LED Backlight Option  
 Dual DVI-I Input  
 Internal AC Power Supply  
 Resistive Touchscreen  
 VESA Mounting



**19" Model 4419R4C**  
 1280 x 1024 Native Resolution  
 Designed & Built to MIL Standards  
 LED Backlight  
 Sunlight Readability Options  
 DVI-D, HD-15 & 5-BNC Inputs  
 Internal AC Power Supply  
 Resistive Touchscreen Option  
 Rack Mounting



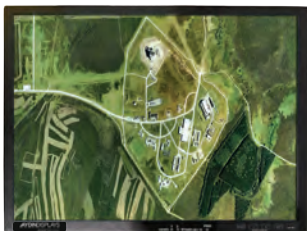
**19" Model 8819**  
 1280 x 1024 Native Resolution  
 Designed & Built to MIL Standards  
 LED Backlight & Sunlight Readable  
 Analog RGB, DVI-D Inputs  
 115 VAC Power  
 Touch Options  
 Rack Mounting



**20" Model 4420R5C/P4C**  
 1280 x 1024 Native Resolution  
 Designed To Meet MIL-S-901D,  
 MIL-STD-167, MIL-STD-461D  
 High Bright/Full Dimming  
 HD-15 (VGA) & 5-BNCs Inputs  
 Internal AC Power Supply  
 P4C- Capacitive Touch Options  
 P4C- Panel Mounting  
 R5C- Rack Mounting



**20" Model 4520R4C/R5C**  
 1600 x 1200 Native Resolution  
 Designed & Built to MIL Standards  
 HD-15 (VGA) or 5-BNC (VGA), DVI-D  
 Internal AC or DC Power Supply  
 Capacitive Touch Option  
 Rack Mounting  
 Flicker Compensation Option



**21" Model 4421A1**  
 1600 x 1200 Native Resolution  
 Designed & Built to MIL Standards  
 LED Backlight Option  
 Dual DVI-I Input  
 Internal AC Power Supply  
 Resistive Touch  
 VESA Mounting



**22" Model 4422**  
 1920 x 1200 Native Resolution  
 Designed & Built to MIL Standards  
 LED Backlight with NVIS Option  
 HD-15 (VGA) and DVI-D  
 Console Mounting  
 Flicker Compensation Option



**24" Model 4424**  
 1920 x 1200 Native Resolution  
 Designed & Built to MIL Standards  
 LED Backlight Option  
 HD-15 (VGA), and DVI-D  
 Touch Screen Options  
 Console Mounting  
 Flicker Compensation Option

# Rugged Military Series Large Screen LCD Displays

**32", 42" Models 4432/4442**  
1920 x 1080 Native Resolution  
Designed and Tested to MIL-S-901D Grade B  
(with custom wall brackets)  
VGA and DVI Inputs  
Auto Ranging Internal AC Power Supply  
Bulkhead or Ceiling Mounting



**46", 52", 55", 65" Models 4446/4452/4455/4465**  
1920 x 1080 Native Resolution  
MIL-S-901D Shock, MIL-STD-167-1A Vibration, MIL-STD-461E EMI  
High Bright with Dimming  
HD-15 (VGA) and DVI-D Input Video Connectors  
Auto Ranging Internal AC Power Supply  
IR Remote Operation/ RS-232 Remote  
Bulkhead or Ceiling Mounting



# Rugged Military Series Panel PC Displays



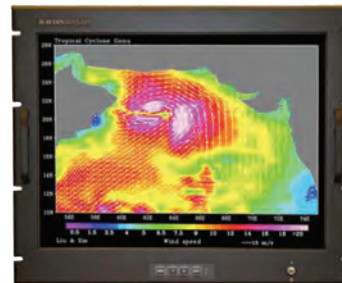
**15" Model 4415R4C-PC**  
 1024 x 768 Native Resolution  
 Designed and Tested To  
 MIL-S-901D, MIL-STD-167-1A,  
 MIL-STD-461E, MIL-STD-810F  
 LAN (copper or fiber)  
 28VDC Power  
 Infrared Touch Panel  
 Rack Mounting



**19" Model 4419R4C-PC**  
 1280 x 1024 Native Resolution  
 Designed and Tested To  
 MIL-S-901D, MIL-STD-167, MIL-STD-461D  
 LED Backlight/ Full Range Dimming  
 Sunlight Readability Options  
 LAN (copper or fiber)  
 Auto Ranging Internal AC Power Supply  
 Rack Mounting



**Model 4420R5C-PC**  
 1280 x 1024 Native Resolution  
 Designed and Tested To  
 MIL-S-901D, MIL-STD-167, MIL-STD-461D  
 High Bright/Full Range Dimming  
 LAN (copper or fiber)  
 Auto Ranging Internal AC Power Supply  
 Rack Mounting



**Model 4520R5C-PC**  
 1600 x 1200 Native Resolution  
 Designed To Meet MIL-S-901D Grade A,  
 MIL-STD-167, MIL-STD-461E  
 Full Range Dimming  
 LAN (copper or fiber)  
 Auto Ranging Internal AC Power Supply  
 Capacitive Touch  
 Rack Mounting



**Model 4424S-PC**  
 1920 x 1200 Native Resolution  
 Designed to Meet Military Standards  
 LAN (copper or fiber)  
 115 VAC Power

Latest Intel Pentium  
 Processor Technology

Solid State or  
 Compact Flash Drives

Up To 128 GB Storage

Supports Windows OS

# Rugged Ground Mobile Displays



Sizes 8.4", 10.4", 12.1", 15"

1000+ Nit with LED Backlight

Designed to Meet MIL Standards

-40° to 70°C Operation

8 to 30 VDC Operation

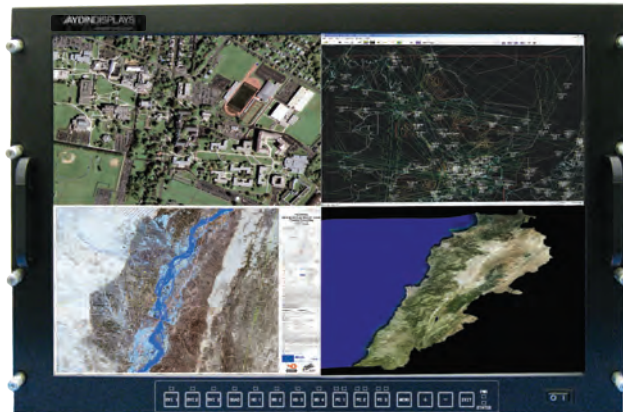
Low Power Consumption

EMI Windows with Mil Connectors

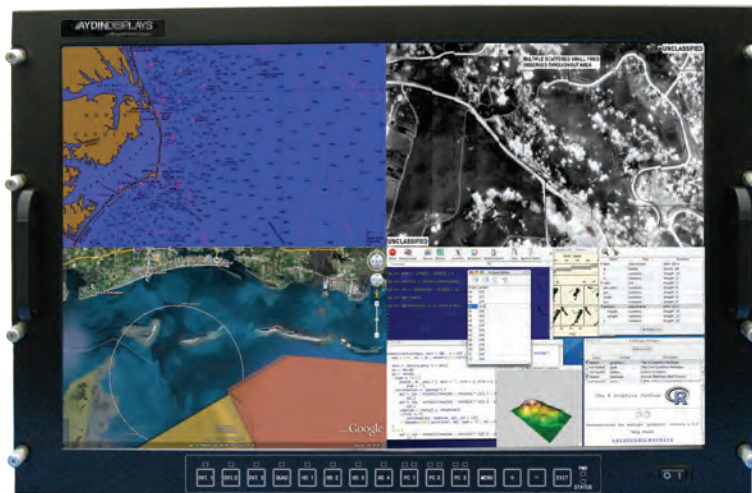
IP65 (Optional IP67)

Optional Resistive Touch

# Airborne Multi Image



*17" Model 4617R1*



*24" Model 4424A2*



*Multi Imager Interface*



## **Display**

1920 x 1200 Native Resolution

Designed & Built to MIL Standards

LED Backlight

HD-15 (VGA), and DVI-D

Designed To Meet RTCA/DO-160 Requirements

## **Interface**

4 HD-SDI 1920 x 1080 Inputs

3 DVI-D 1920 x 1200 Inputs

DVI-D Output to Display

User controls for selecting fullscreen mode or quadrant mode for any of the HD-SDI inputs

Fullscreen mode for any of the 3 DVI-D signals

USB interface for keyboard and trackball;  
switchable between 4 computer signals

# OMEGA

## Commercial ABS Maritime Displays

- 2-Year Warranty
- ABS Type Approved
- IEC60945 and IACS-UR-E10
- 15" and 19" Sizes
- Sunlight Readable with LED Backlight for Reliability
- AG/AR Hydrophobic Glass Window
- Dual Power Supplies 90-264 VAC and 9-32 VDC
- IP66 Splashproof Front, IP54 Rear (Fanless)
- All-Aluminum Construction for Marine Use
- DVI-D x 1; VGA x 1; Composite Video x 2; RS232
- Standard Panel Mounting for Drop-In Replacement to Series 1
- Space-Saver and Stand-Alone Mounting Options
- Optional Touch Screens; Resistive or P-CAP Multi-touch
- Made and Serviced in the USA



*Aydin introduces the new Omega Series of American made ECDIS Marine products- designed as drop-in replacements for most commercial marine displays.*

*Includes 2 Year Warranty*





# Industrial Grade Displays



*Aydin Displays has been designing and supplying high quality display equipment to a broad spectrum of industrial markets for over 45 years. Aydin has established a reputation of expertise in designing and supplying standard and customized products for many market segments.*

*Our displays are built and serviced to last, and therefore relied on in many important arenas, including Aerospace, Chemical Plants, Homeland Security, Flight Simulation, Food & Beverage Processing, Manufacturing, Pharmaceuticals, Pulp and Paper, and Transportation.*

*Food Processing*

*Oil & Gas Exploration*

*Process Control*

*Marine Environments*

*Sunlight Readability*

*NEMA 4X Sealed*

# Cambridge Standard Industrial Displays



**8.4" Model CFP84**  
Panel, VESA Mount  
SVGA or XGA Resolution  
Available in 5U Dual Configuration



**12" Model CFP12**  
Panel Mount  
XGA Resolution  
VGA, DVI-D, Optional Video Inputs  
Optional Sunlight Readability



**15" Model CFP15**  
Rack, Panel or VESA Mount  
VGA to XGA Resolution  
VGA, DVI-D, and Video Inputs  
Optional Sunlight Readability  
Optional DC Models



**17" Model CFP17**  
Rack, Panel Mount  
VGA to SXGA Resolution  
VGA, DVI-D, and Video Inputs  
Optional DC Models



**19" Model CFP19**  
Rack, Panel or VESA Mount  
VGA to SXGA Resolution  
VGA, DVI-D, and Video Inputs  
Optional Sunlight Readability  
Optional DC Models



**21.3" Model CFP21**  
VESA or Chassis Mount  
1600 x 1200 Native Resolution  
VGA, DVI, S-Video and NTSC Inputs  
Sunlight Readable

## Process Control

The process industry requires displays of many different sizes and capabilities- touch screens, totally sealed units and units with computers. Aydin supplies NEMA 4X totally sealed enclosures with and without computers to customers worldwide in the food and beverage market.

## Oil & Gas Exploration

Rugged commercial products are a necessary component as displays are mounted on both exploration trucks and oil rigs. Aydin takes standard commercial products and modifies the chassis and electronics to withstand the demanding usage in this environment.

## Food Processing

Aydin offers a complete line of NEMA 4X Stainless Steel Panel Mount products that integrate into customer enclosures used in food manufacturing. This environment requires wash downs with harsh chemicals to keep the production area sanitized. Many displays are supplied with HMI touch interfaces for direct interaction in the daily manufacturing processes.

# Cambridge Standard Wide Screen Displays



**15.4" Model WFP154R2**  
 Native Resolution 1280 x 800 (WXGA)  
 Sunlight Readable 600 nits LED  
 Optional Resistive Touch  
 VGA, DVI-D,  
 Optional Composite & S-Video  
 Optional AC/DC Power  
 VESA or Rack Mount



**15.6 " Model WFP156R2**  
 Native Resolution 1366 x 768(HD)  
 Bright 300 nit LED Panel  
 Optional Resistive or P-Cap Multi-Touch  
 VGA, DVI-D,  
 Optional Composite & S-Video  
 Optional AC/DC Power  
 Rack , VESA or Panel Mount



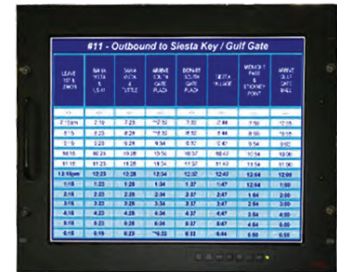
**17.1" Model WFP17.1**  
 Native Resolution 1920 x 1200 (WUXGA)  
 VGA, DVI, Optional Video  
 Optional AC/DC Power  
 Rack, VESA or Panel Mount



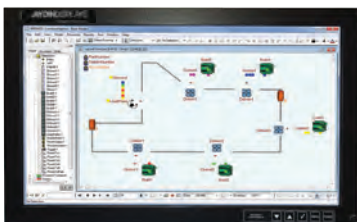
**17.3" Model WFP17.3**  
 Native Resolution 1920 x 1080 (FHD)  
 VGA, DVI, Optional NTSC  
 Optional AC/DC Power  
 Rack, VESA or Panel Mount



**19" Model WFP19R2**  
 Native Resolution 1400 x 900 (WXGA+)  
 250 nits LED  
 Optional Resistive MultiTouch Systems  
 VGA, DVI-D, Composite & S-Video  
 Optional AC/DC Power  
 Rack or Panel Mount



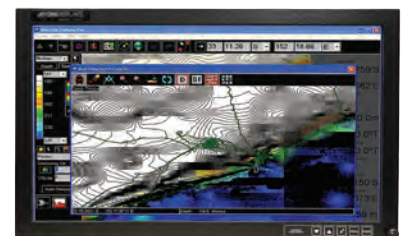
**19" Model WFP196R2**  
 Native Resolution 1600 x 1200 (UXGA)  
 Bright 600 nits CCFL  
 with wide Viewing Angle  
 Optional Touch Systems  
 VGA, DVI-D, Composite & S-Video  
 Optional AC/DC Power  
 Rack VESA or Panel Mount



**21" Model WFP21.5**  
 Native Resolution 1920 x 1080 (FHD)  
 300 nits with 5000:1 CR  
 VGA, DVI-D, Composite & S-Video  
 Optional AC/DC Power  
 VESA or Panel Mount



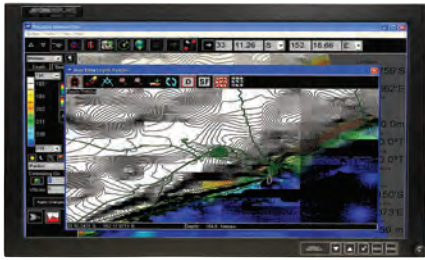
**22" Model WFP22W2**  
 Native Resolution 1680 x 1050 (WSXGA)  
 300 nits with 1300:1 CR  
 Optional Sunlight Readable  
 Optional Resistive Touch  
 VGA, DVI-D, Composite & S-Video  
 Optional AC/DC Power  
 VESA or Panel Mount



**24" Model WFP24W2**  
 Native Resolution 1920 x 1080 (FHD)  
 300 nits with 3000:1 CR  
 Optional Sunlight Readable  
 VGA, DVI-D, Composite & S-Video  
 Optional AC/DC Power  
 VESA or Panel Mount



# Cambridge Large Wide Screen Displays



**24" Model CFP24W2**  
 Native Resolution 1920 x 1200 (WUXGA)  
 300 nits with 1000:1 CR  
 Optional Sunlight Readable  
 VGA, DVI, NTSC & S-Video  
 Optional AC/DC Power  
 Optional Touch System



**30" Model CFP30W2**  
 Native Resolution 2560 x 1600  
 400 nits with a 1000:1 CR  
 Dual Link DVI-D  
 Bonded AR Window  
 Optional Capacitive Touch  
 VESA 100mm Mount



**32" Model CFP32W2**  
 Native Resolution 1920 x 1080 (FHD)  
 Bright 1000 nits Sunlight Readable  
 Video Inputs: VGA, DVI-D  
 AR/AG Window  
 VESA 100/200/400mm Mount



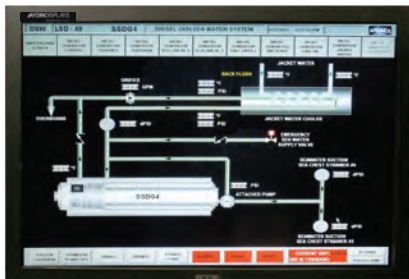
**42" Model WFP42W2**  
 Native Resolution 1920 x 1080 (FHD)  
 Bright 700 nits with LED BL  
 Video Inputs: VGA, DVI-D  
 Bonded 6mm AR Window  
 Optional IR Touch System  
 VESA 100/200/400mm Mount  
 Designed To Meet MIL-STD 901D Grade A



**47" Model WFP47W2**  
 Native Resolution 1920 x 1080 (FHD)  
 Bright 700 nits with LED BL  
 Video Inputs: VGA, DVI  
 Bonded 6mm AR Window  
 Optional IR Touch System  
 VESA 100/200/400mm Mount



**55" Model CFP55W1**  
 Native Resolution 1920 x 1080 (FHD)  
 Bright 700 nits with LED BL  
 Video Inputs: VGA, DVI  
 Bonded 6mm AR Window  
 Optional IR Touch System  
 VESA 100/200/400mm Mount  
 Designed To Meet MIL-STD 901D Grade A



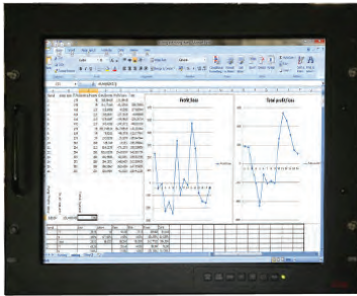
**65" Model CFP65W1**  
 Native Resolution 1920 x 1080 (FHD)  
 Bright 360 nits with LED Backlight  
 Video Inputs: VGA, DVI  
 Bonded 6mm AR Window  
 Optional IR Touch System  
 Designed To Meet MIL-STD 901D Grade A

## Customize Your Display With These Options:

- Touch Screens
- Sunlight Readable
- Wide Screens
- AC or DC Models
- Video Inputs  
 (VGA, DVI, S-Video, NTSC)
- 4X Stainless Steel

*Not all options available on all models*

# Vector Rugged Industrial Displays



## **19" Model VFP19**

*Rack, Panel or VESA Mount  
Bright 350 nit LED Backlight  
VGA to SXGA Resolution  
VGA, DVI-D, S-Video NTSC/PAL  
UL with 2 Year Warranty*

### *Options:*

*Touch Screens- Resistive, Capacitive, SAW  
600 nit Sunlight Readability  
AC/DC*



## **20" Model VFP20**

*Rack, Panel or VESA Mount  
VGA to UXGA Resolution  
VGA, DVI-D and Video Inputs  
UL with 2 Year Warranty Option*

### *Options:*

*Touch Screens- Resistive, Capacitive*

# Vector 1U Industrial Displays Keyboards and KVMs



## **Models VFP171U, 191U and 201U**

*Rugged Industrial Design  
1U Displays Only  
Displays with Keyboards  
Display, Keyboard and KVM*

### *Options:*

*MIL Version  
Wide Screens  
Touch Screens  
AC and DC Inputs  
PS2, USB, Mouse Pad or Track Ball  
4, 8 or 16 Port KVM*



## **17.1" Model WFP17R2**

*1920 x 1200 (WUGA) Native  
USB KBD with Glide Path Touch Pad  
-20 to 50°C Operation  
DVI, VGA  
4 Port KVM*

# Marine Displays



**OMEGA ABS Series** (See Page 14)  
Marine ECDIS Compliant Displays  
19" ABS Type Approved  
Many Sizes Available  
Standard Brightness & Sunlight Readable  
Dual AC/DC Power Supply for Reliability  
Panel Mount IP66 Front, IP54 Rear



**CML Rugged Marine Displays**  
Sizes 8.4", 10.4", 12.1", 15"  
1000+ Nit with LED Backlight  
Designed to Meet MIL Standards  
-40° to 70°C, 10 to 36VDC  
Low Power Consumption (Typ 17W)  
EMI Windows w/ Mil Connectors  
IP67

## Sunlight Readability

*Direct sunlight readability and high temperature operation are demanding requirements in display manufacturing. Aydin offers solutions to protect the units and improve performance. Sunlight readable displays provide continued functionality for outdoor kiosks, drilling platforms, marine vessels, and many other applications.*





# Rugged Transportation Displays



*Sizes 12.1", 15", 17", 19"*

*Panel or VESA Mount*

*Dust Sealed and Splash Proof*

*Sunlight Readable w/ LED Backlight*

*Optional Touch Systems*

*Bonded Safety Window*

*VGA, DVI and Video Inputs*

*Wide Range DC Power Input*

## *Customize Your Display With These Options:*

*Touch Screens  
(Resistive, Capacitive,  
Projective Capacitive, Multitouch  
Infrared, SAW)  
Optional Multi-Touch Versions*

*Sunlight Readable  
Wide Screens  
AC or DC Models  
Video Inputs*

*Not all options available on all models*



# Legacy Displays



*Sizes 15", 19", 24"*

*15.75 to 68kHz Replacements for CRTs*

*Rack and VESA Models*

*Supports Old Video Formats*

*Syncs on 3 (SOG), 4 or 5 Wire Sync*

*Optional Touch Screens*

*Optional AC/DC Sources*

## *Legacy Displays*

*Many CRT displays built in the last few decades are embedded in high-cost equipment and are still maintained today. As these analog CRTs and old LCDs reach end of life, customers look for digital LCD alternatives that conform to the same video formats. As a leader in the original manufacturing of CRT products, Aydin provides solutions with a line of replacement flat panels.*



# Air Traffic Control Displays



*Aydin Displays offers a full line of displays for all aspects and applications of ATC, including EnRoute, Approach Control and Tower, as well as military ATC applications. Aydin's wide range of products include main radar console displays, sunlight readable tower displays and ruggedized mobile ATC, as well as large format displays for supervisory ATC. Additionally, Aydin can supply projection displays for full fidelity simulation applications through one of our sister companies.*

*Aydin Displays conducts extensive self test and standard SNMP reporting for early fault detection and maximized uptime of the most mission-critical components of ATC radar consoles. Additionally, Aydin incorporates unique features to specifically address the demanding needs of the ATC environment, with an emphasis on the overall support of safety goals.*

*Aydin routinely maintains deployed systems in 10+ year product life environments, and is proud to be the only North American manufacturer for the model 30281 2K x 2K display. This display functions as a direct replacement for the Sony DDM display and supports all features of the legacy Sony monitor along with new features that will serve well into the future.*



# Air Traffic Control Displays



## **20" X 20" Model 30281**

2048 X 2048 Native Resolution

1000:1 Contrast Ratio

Industry Leading Wide Viewing Angle

LED Backlight

Dual DVI and RGB Analog Inputs

Host or Front Panel OSD Controls

Wide Dimming Range

Sony DDM ATC Display Replacement

Optional Bonded Glass

Only 2K x 2K Display Manufactured in North America



## **20.1" Model 4420TD**

1280 X 1024 Resolution

700 nits Sunlight Readable

Contrast Ratio Greater Than

10:1 @ 6000 fL

Bonded AR/AG Window

HD-15 (VGA), 5-BNCs & DVI-D Inputs

Auto Ranging Internal AC Power Supply



## **21.3" Model CFP21W2**

1600 X 1200 Resolution

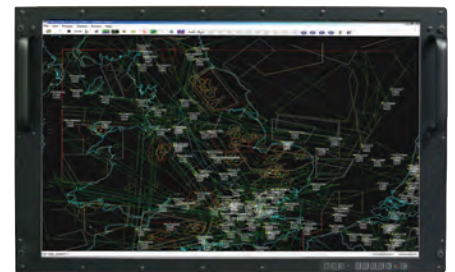
760+ nits Sunlight Readable

Contrast Ratio 24:1 @ 6000 fL

Bonded AR/AG Window Or

Bonded Capacitive Touchscreen

Auto Ranging Internal AC Power Supply



## **24" Model CFP24**

1920 x 1080 or 1920 x 1200

700 nits Sunlight Readable

Contrast Ratio Greater Than 7:1

Bonded A/R Window

HD15, DVI-D, Composite Video

Auto Ranging Internal AC Power Supply

Successfully Completed OT & E Testing

Approved for use by FAA Air Traffic Facilities

*Aydin ATC Displays Are Installed In Airports Worldwide  
for Multiple FAA and International Programs*

# R u g g e d

## Rugged Camera Systems

- Meets Military Standards for Shock, Vibration, EMI
- Auto/Manual Focus, Auto/Manual Iris Pan, Tilt, Zoom
- 720P/1080P HD
- 18x, 28x, 36x Optical Zoom
- 1.4/0.01 Lux Minimum Illumination
- ONVIF Profile S Compliant
- RS485 Communication
- H.264 Streaming
- Power Over Ethernet (POE)
- Power/Control Interface Enclosures
- Pedestal Mounting
- RS485 Distribution Enclosures
- Composite Cable Assemblies

# Camera





# Mounting Options



## **LCD Desk Stand**

*Position monitor at desired height on pole  
Pivot monitor 90 degrees for portrait or landscape views  
Sturdy base provides secure platform  
Compatible with all VESA monitors- includes  
75mm and 100mm VESA mounting plates*



## **LCD Wall Mount Arm**

*Reposition the monitor with one hand- no knobs to turn  
Monitor pivots 90 degrees for portrait or landscape viewing  
Tilt monitor up and down 30 degrees  
Compatible with all VESA monitors-  
includes 75mm and 100mm VESA mounting plates  
4" and 8" extension arms available-  
can be combined to increase extension up to 12"*



## **Large Screen Wall Mount**

*Expandable - accommodates flat panel displays from 27" to 60"  
Adjust screen tilt by -15 degrees  
Low profile - mount concealed behind display  
Includes integrated level to ensure correct setup  
Security option - accommodates padlock to secure display  
Includes cable manager  
Supports up to 198 lbs.  
Mounts to drywall (studs) or concrete surfaces*

# Contact Aydin

## ***Worldwide Headquarters***

*Aydin Displays*

*1 Riga Lane*

*Birdsboro, PA 19508*

*1-866-367-2934*

*sales1@aydindisplays.com*

*www.aydindisplays.com*



**Aydin Displays**  
1 Riga Lane  
Birdsboro, PA 19508  
1-866-367-2934  
Email: [sales1@aydindisplays.com](mailto:sales1@aydindisplays.com)  
[www.aydindisplays.com](http://www.aydindisplays.com)



**AYDINDISPLAYS**

a  sparton company

*All specifications subject to change without notice.  
For additional information, please contact your Aydin Displays sales representative.*